

**BURKETURF IS A DURABLE AND ENVIRONMENTALLY FRIENDLY FLOOR MANUFACTURED FROM RECYCLED TIRES**

Anti-slip flooring engineered for both indoor and outdoor installations. Perfect for damp or wet areas, ramps, entry ways and concourses. Easy maintenance includes vacuuming and spot cleaning as needed. Outdoor installations can be hosed off and left to dry.



SPECIFICATIONS	
Thickness	3/8" (± 1/8" Tolerance)
Tile Size	12" x 12"
Weight	2 lbs. per sq. ft.
Carton	25 Tiles
Color	Natural Barktone Charcoal
Blend Colors	Black/Brown
Adhesive	Burke Adhesive BR-711 required for warranty.

**Fire Test:** ASTM D-2859 (Pill Test) - Passed; Char Diameter = .672

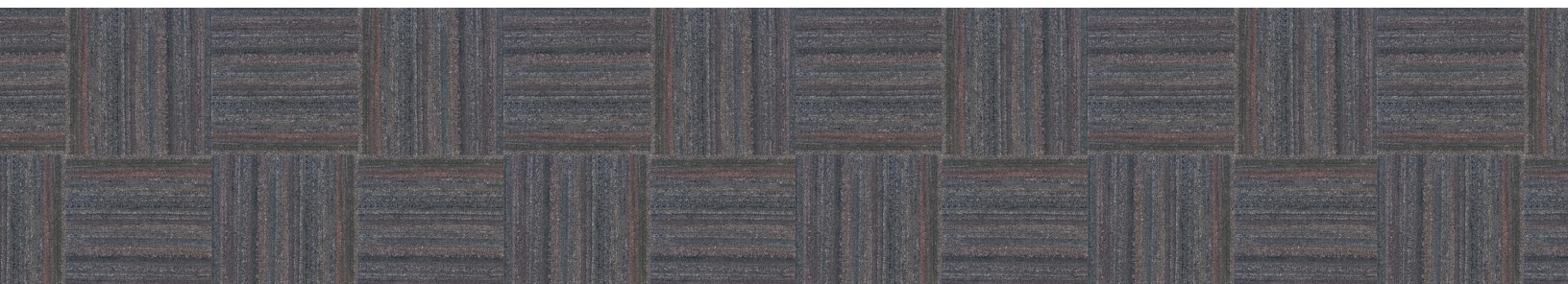
**Slip Resistance:** ASTM D 2047 - static coefficient of friction.

**Hardness:** ASTM 2240 - not less than 85 Shore A

**Warranty**

Material, workmanship, delamination and wearability guaranteed for 6 years. See warranty, valid only when installed with Burke adhesive.

Contact us at:  
[www.burkeflooring.com](http://www.burkeflooring.com)



## General Specifications

1. BurkeTurf is made from recycled bus and truck tire strips adhered to a reinforced scrim backing. This rugged, carpet-like tile is highly wear resistant and is spike-proof. Its non-skid surface is ideal for ramps, concourses, golf pro shops, entrances, skating rinks, schools, and other sports arenas. BurkeTurf is recommended for both interior and exterior applications, but not recommended for commercial kitchen environments.
2. Tiles to be 12" x 12" x 3/8" minimum thickness.
3. BurkeTurf resists deterioration due to exposure to moisture.
4. Color: Black/Brown

## Adhesive

1. Use Burke Flooring BR-711 Adhesive
2. A solvent-free aqueous adhesive that only needs to be applied to one surface. It allows repositioning of the tile during installation. BurkeTurf may be installed on any smooth, dry interior or exterior surface.
3. For exterior installations, ensure that the newly installed product will not be exposed to any moisture for a period of 72 to 96 hours to permit the adhesive to dry properly.

## Maintenance & Cleaning

### General Cleaning

Power vacuum or sweep as needed to remove loose dirt. BurkeTurf retains traffic dirt (protecting interior areas). In some heavy traffic areas, daily vacuuming may be desired.

Outdoor installations can be cleaned by hosing to remove excessive mud.

### Shampoo or Steam Cleaning

Occasionally, when surface becomes heavily soiled, scrubbing with a commercial type shampoo machine and vacuuming dry is recommended to restore to original finish.

Outside installations may be shampooed and then rinsed by hosing.

### Removing Foodstuff, Beverage, Stains, etc.

Mix a strong concentration of detergent with any of the commercial bleaches, such as, straight chloride, Clorox, purex and others. Scrub vigorously with a hand brush.

Vacuum carpet thoroughly to remove as much dampness as possible.

### Removing Cigarette Burns

If burns are not too badly charred, a coarse wire brush can be used to brush up the nap. Should this prove unsatisfactory, remove the burned tiles from the floor and razor scrape the old adhesive from the floor surface. Install a replacement tile by following the non-porous installation instructions as listed on the BR-711 adhesive container.



**Burke**  
F L O O R I N G

2250 South Tenth Street  
San Jose, CA 95112

Customer Service:  
East: 800-447-8442  
West: 800-675-8260

[www.burkeflooring.com](http://www.burkeflooring.com)